

EBTECH 
Industrial Building Solutions™



UPFAST™

STRUCTURAL STEEL MEZZANINE SYSTEMS

INNOVATIVE SOLUTIONS | MODULAR FLEXIBILITY™



 **Contract Holder**
Contract 0123456789



UPFAST™ MEZZANINES | APPLICATIONS

INNOVATIVE SOLUTIONS | MODULAR FLEXIBILITY™

Engineered to Maximize Available Space

Today's successful businesses squeeze the most from every square foot of available space they have, including the available vertical space. **Ebtech's** Modular Structural Mezzanines satisfy this directive by making existing space available for productive endeavors without a costly building addition.

We design and manufacture our mezzanines here in the USA. The structural steel design is engineered for maximum strength, stability and safety. Unlike roll-formed mezzanines whose designs are not flexible in configurations or capacity, our mezzanines maintain their maximum capacity even when taken down and reconfigured. Our mezzanines do not have limitations as to the span size, allowing for more usable space underneath. Flexibility is what we strive for, which allows our systems to grow with the needs of your business.

Structural Mezzanines are ideal for the following multitude of uses:

- Ebtech In-Plant Offices
- Archive Storage
- Catwalks
- Conveyor Platforms
- Equipment Platforms
- Manufacturing
- Observation Decks
- Parts Storage
- Range Towers
- Vision Towers
- Warehousing
- Work Platforms

Our systems include a complete line of customizable components such as handrails, stairs, safety gates, security caging, guard rails, bollards, column protection and a wide choice of flooring materials.



UPFAST™ MEZZANINES | INSTALLATION FEATURES



- Clearly Labeled installation drawings
- Components are labeled to match drawing labels
- Completely modular components
- All bolt-together construction
- Columns are completely equipped and ready to have beams bolted to them
- Pre-drilled holes in column connection plates match pre-drilled holes in beams for easy aligning and installation
- Unique connection angle for column/beam assembly provides speedy assembly and a safe work area. The angles have beam connection holes to doubly secure the beam to column union.
- Handrail sections are completely factory welded
- Stair stringers have the handrail sections factory welded in place

a mezzanine
can **double** or **triple**
your existing floor space - for up to
80% less
than the cost of an addition.



Your Ebtech Advantage

Ebtech designs and manufactures our structural mezzanines in the USA. We use only high strength structural steel components for high capacity and long life. Our engineers are experienced in providing cost effective designs and our manufacturing facility ships quicker than the competition. We react to your needs based on the firm position that customers are our first priority.

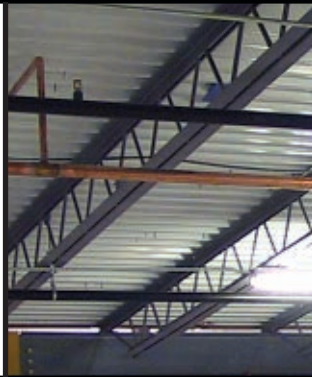
www.ebtechindustrial.com
800.369.4321

EBTECH 
Industrial Building Solutions™

UPFAST™ MEZZANINES | COMPONENTS

BAR JOIST

Open web bar joist is designed to support long spans while reducing the framing weight and number of vertical support columns. Open construction offers framework for installation of mechanical, electrical and sprinkler systems.



I-BEAM SUPPORT MEMBERS

Structural I-beams of ASTM A36 feature additional reinforcement for maximum strength and resistance to point loading. Universal I-beam shape offers application flexibility and minimal deck thickness for higher overhead clearance.



FOOTPLATES

Centered base plate of ASTM A36 steel supports with maximum stability, distributing load evenly and minimizing pressure between base plate and floor.



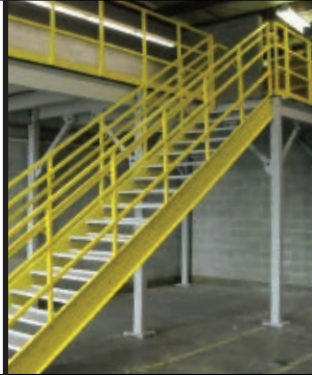
SWING GATE

Offers easy access for forklift and palletized loading. Spring-loaded locks assure safety.



STAIRS

All one-piece stair assemblies are fully factory-welded. Open or closed stair treads of formed textured checker plate provide non-skid surface. Complies with four major building codes for industrial applications.



FLOORS

Standard decks include tongue-and-groove plywood, steel bar grate, diamond deck, plank deck and concrete. Special deck materials are available upon request.



HANDRAILS

Cleanly constructed of three closed square tube horizontal rails and 4" closed tube kick plate. Strong one-piece welded assembly lends additional support to the structure. Complies with major building codes for industrial applications.



TELESCOPING OR SLIDING GATES

Designed for areas with restricted space, where swing gates could not function. Telescoping gate slides aside within larger-bore side rails. Sliding gate rolls aside on casters. Both allow unrestricted access to mezzanine levels without taking up extra space.



EBTECH 
Industrial Building Solutions™

INNOVATIVE SOLUTIONS | MODULAR FLEXIBILITY™

724.628.6100

**2241 Industrial Drive, Suite C
Connellsville, PA 15425**

www.ebtechindustrial.com

CLEANROOMS • COOLERS & FREEZERS • HIGH WALL SYSTEM • IN-PLANT OFFICES • INTERIOR BUILDINGS • EXTERIOR BUILDINGS
COMMUNICATION TOWERS • STEEL BUILDINGS & TRAILERS • GUARD SHELTERS • HOUSING • OBSERVATION TOWERS
PROCESS ENCLOSURES • STRUCTURAL MEZZANINES • STAIRS • LANDINGS • SAFETY GUARD BARRIERS & BOLLARDS • RPS
CONEX REPURPOSING • FLAT PAK™ • ISO KITS™ • VAULTS • MOUT SYSTEMS • MIL-TOUGH® BLAST AND BALLISTIC BARRIERS



American Welding Society
Sustaining Company Member