

M O D U L A R F U R N I T U R E



F O R T H E M A I L C E N T E R

*MAIL MASTER*

**REI**



For more than 20 years, REI has been designing, fabricating, building and improving Mail Master products.

In the design stage, products are conceived as solutions to issues of efficiency, mail flow and ergonomics.

Because REI is a small business, we are able to offer products that are made to order. Beginning with quality raw materials, each component is precision machined to ensure an accurate fit. Components then move to our finishing department where the work is hand done by experienced craftsmen.

# MAIL MASTER

The mail center furniture  
that's made to order



Products are then pre-assembled to reduce down time during installation of your new furniture.

Finally, each product is wrapped, inspected packaged, and banded to shipping pallets to ensure a safe journey to your mail center.

Mail Master has improved the efficiency of thousands of mail centers in major corporations, motion picture studios, insurance companies, universities, hospitals, financial institutions, and federal, state and local government offices across the country.

<b>TABLE OF CONTENTS</b>	<b>PAGE</b>
Bulk Sort Stands .....	11
Color Charts.....	Back Cover
Literature Racks.....	11
Ordering Information .....	Back Cover
Risers .....	8
Sort Modules .....	4, 5
Sort Stations .....	9, 10
Tables .....	6, 7

Big enough to do the job  
Small enough to do it right.

**REI**

# MAIL MASTER SORT MODULES

Mail master offers the most extensive assortment of sort modules, all designed to ease the flow of any sort function.

Cabinets constructed of machine

fabricated wood parts are hand assembled and finished in a wide variety of high pressure laminate colors\*. Interiors in light gray, almond or white laminate complement exterior colors.

Chrome plated steel shelf tracks allow shelf adjustment in one inch increments.

Heavy duty adjustable steel shelves feature 1/2" label area and front cut out for viewing contents. Larger shelves (legal size, over-size, and courier bag size) are reinforced with rigid welded steel strips. Shelf lock pins may be added to any sort shelf, but are not required.

Select any of these heights.....For any of these module styles.  
In any Mail Master paint and laminate color combination.

**19-1/2" High Sort Module**  
18" Interior Clearance.  
Five shelves per vertical section.



**26-1/2" High Sort Module**  
25" Interior Clearance.  
Seven shelves per vertical section.



**31-1/2" High Sort Module**  
30" Interior Clearance.  
Nine shelves per vertical section.



\*Back panel exterior not laminated unless specified.



### LETTER SIZE

Interior shelf clearance:  
9-1/4"W x 11-1/4"D.  
Select from models one to six  
sections wide in any of three  
heights. Combine and stack  
modules to meet requirements.



### LEGAL SIZE

Interior shelf clearance:  
11-1/4"W x 15-1/2"D.  
Select from models one to six  
sections wide in any of three  
heights. Combine and stack  
modules to meet requirements.



### OVERSIZE

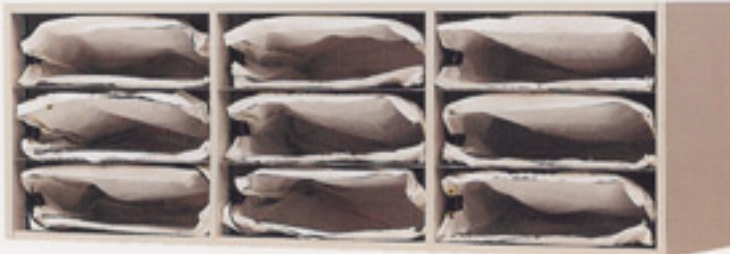
Interior shelf clearance:  
13-1/2"W x 15-1/2"D.  
Select from models one to five  
sections wide in any of three  
heights. Combine and stack  
modules to meet requirements.



### PRE-SORT

Interior shelf clearance:  
5-1/2"W x 11-1/4"D.  
Select from models one to nine  
sections wide in any of three  
heights. Combine and stack  
modules to meet requirements.

### COURIER SORT MODULES



Interior shelf clearance: 17-3/4"W x 15-1/2"D x 6"H. Select  
from models one to four sections wide. Designed for reusable  
nylon Priority Mail or courier pouches 18"W x 14"D with 4"  
gusset. Specially designed shelf keeps pouch open to provide  
direct sorting. Shelf lock pins included. Pouches ordered sep-  
arately.

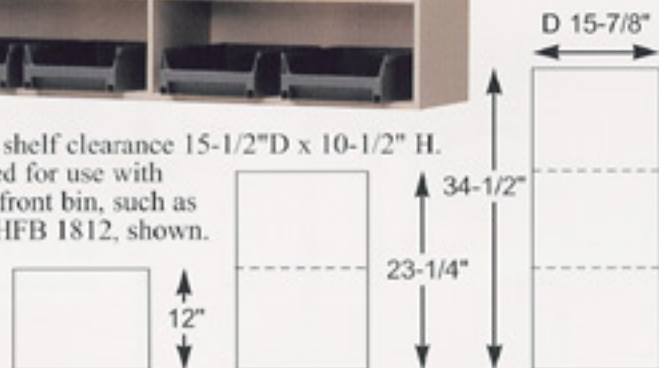
Module Height	Pouch Capacity Per Section
19-1/2"	3
26-1/2"	4
31-1/2"	5



### BIN SORT MODULES

Interior shelf clearance 15-1/2"D x 10-1/2" H.  
Designed for use with  
hopper-front bin, such as  
Model HFB 1812, shown.

Side views



### ACCESSORIES

#### SHELVES

All REI Sort Modules include shelves.  
Additional shelves available for all sizes.



Pre-sort  
LS 06



Letter size  
LS 12



Legal size  
LS16



Oversize  
OS14

#### SORT BINS

Use hopper front bins  
with Mail Master Bin  
Sort Modules. Model  
HFB1812 shown.



#### PLEX DISPLAY HEADER

Mounts above sort module  
to display routing guides  
easy to see, yet out of the  
way.



#### PLEX DOORS

Designed for use on open  
back sort modules. Order one  
door per vertical section, per  
module. Chrome hinges and  
door knob.



#### PRIORITY MAIL/ COURIER POUCH

Reusable nylon Priority Mail  
or courier pouch for use with  
Courier Sort Modules.  
Minimum order 100 bags.



#### TAG HOLDERS

Select from three styles:  
• Nickel Plated Steel Holder 2" or 4" x 1/2"  
• Flexible Magnetic Holder 1/2" high or 1" high, sold by linear  
foot. Cuts with scissors.  
• Clear Plastic Holder with labels 3" x 1/2".

# MAIL MASTER CABINETS AND TABLES

With over 250 models, Mail Master offers an extensive array of tables designed exclusively for use in high traffic mail centers and shipping rooms. Select from optional accessories to customize our tables to your exact requirements.

With the variety of options and color combinations creating thousands of table possibilities, we think we can provide the right table to meet your needs. If not, custom designs and colors are also available by special order.

All Mail Master tables feature heavy duty steel bases with chrome plated steel legs and leveling glides. Wood tops are finished in high pressure laminate with matching edges, or ask for optional PVC table edges at no additional charge.

## BC/MBC

Base Cabinet tables combine modular flexibility with the storage capacity and appearance of built-in cabinets. These tables come fully equipped with bottom shelf and sliding doors. BC style tables are 30 inches deep. MBC style tables are 24 inches deep. Both are available in either 30 inch or 36 inch fixed height with leveling glides.



## CTA/CMA



## STA/MTA

Sorting tables are the original Mail Master work horses. Select models with shelf and/or doors for use with mailing machines or to provide storage. Shelf clearance is 13 inches. Height adjusts from 28 to 36 inches.

STA style tables are 30 inches deep.  
MTA style tables are 24 inches deep.



## WT WORK TABLES

All purpose work tables provide surface space essential to multi-purpose mail centers.



Welded steel support frame with chrome plated steel legs @ 29-1/2" fixed height. Not recommended for use with sort modules.



Base Cabinet table shown with optional intermediate shelf.

Console tables adjust in height from 28 to 36 inches. Side and back panels are 22 inches long to provide 19 inch shelf access clearance on models with bottom shelf. Console tables are compatible with all Mail Master drawer units.

CTA style tables are 30 inches deep.

CMA style tables are 24 inches deep.



## SCALE TABLES

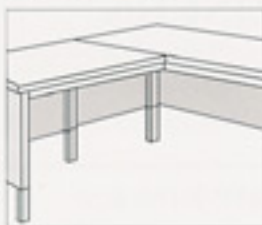
Convenient bi-level top allows adjustment of center surface to position scale platform level with adjacent work surfaces. Available in CTA, CMA, STA and MTA table styles. Legs also adjust from 28 to 36 inch height.



## ACCESSORIES

### DESK RETURN

attaches at right angle to any CTA or CMA table. Available for left or right side return. Ideal for typewriter or PC.



### TABLETOP CORNER FILLER

may be used in place of corner table for L-shaped or U-shaped sorting layouts. Welded steel support frame attaches to adjacent tables.



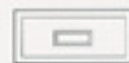
**DUMP RIMS** provide 6" back and side rims to contain large mail volume. Add to any table. Laminated to match.



### DRAWER UNITS

Single box drawer or pencil tray may be used with any Mail Master table.

Triple box drawer unit and combination box and file drawer unit for use with CTA or CMA tables only.



### STORAGE DIVIDERS

Vertical dividers mounted on table shelf for storage of large envelopes or flat boxes.



### INTERMEDIATE SHELVES

Add to any BC, MBC, CTA or CMA table to increase storage options.



### CASTERS

Set of 4 swivel casters (2 locking) for any table with bottom shelf.



### LOCK SET

may be added to any table with doors.



# MAIL MASTER RISERS

Mail Master offers three riser styles to accommodate a variety of functions and allow flexibility in layout design. Risers may be used under sort modules to allow full use of tabletop

workspace. When a riser is to be used for elevated work space, such as an equipment platform, add the optional laminated top.

## RMP RISERS



RMP Risers are constructed of heavy gauge formed steel with baked enamel finish to match table base. Two inch steel front channel eliminates need for intermediate supports on risers up to 75 inches wide.

Enclosed side and back panels may also serve as dump rim.

Add an optional laminated wood top to provide raised work surface or equipment platform when used without sort module.

Optional decorator panels of upholstered tackboard enhance the atmosphere and improve acoustics in any work area.

Available in 7", 12", 19-1/2" and 26-1/2" height. Clearance is 2" less than overall height.

## RWT RISERS



RWT Risers feature a sturdy rolled steel welded support frame and chrome plated legs. Mounting hardware secures riser to table top.

Add an optional laminated wood top to provide raised work surface or equipment platform when used without sort module.

Specify **any** height up to 28 inches. Clearance is 2" less than overall height.

## RSR RISERS



RSR Risers are constructed of 3/4" wood, laminated to match tabletop and sort module. Intermediate support(s) are required on models over 48 inches long. Exterior back panel and top panel are not laminated unless specified.

Specify **any** height up to 12 inches. Clearance is 3/4" less than overall height.

## ACCESSORIES

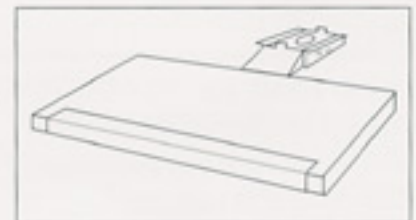


**TASK LIGHT** mounts under RMP or RWT style riser to brighten work area. Select 24 inch or 36 inch length.

### KEYBOARD HOLDERS

**KB1** Fully articulating platform mounts under RMP or RWT style riser for stand-up work stations.

**KB2** Keyboard Drawer mounts under desk tops. Slides out for **keyboard access**.



# SORTING STATIONS



## STATION 6

Base Cabinet style tables provide maximum storage capacity. Includes angled tabletop corner filler. Sort modules provide 90 openings. Overall height 61-1/2 inches. Specify Letter, Legal or Oversize sort modules.



## STATION 7

Features Base Cabinet style table for maximum storage. 31-1/2" high sort module provides 40 openings. Table height 30", total height 61-1/2". Specify Letter, Legal or Oversize sort module.



## STATION 3

For smaller sort stations. STA table provides storage. Laminated 8" high RSR style riser allows full use of work surface. Sort module provides 40 openings. Height adjusts from 62-1/2 to 72-1/2 inches. Specify Letter, Legal or Oversize sort module.

## STATION 4

This incoming dump/sort station provides 98 openings plus dump table in step saving L-shaped layout. STA style tables include storage. Height adjusts from 74 to 82 inches. Specify Letter, Legal or Oversize sort modules.





## STATION 1

CTA Console Tables feature concealed storage area under tables in this step saving layout. Risers under three sort modules may be placed to left or right

side of station to fit incoming/outgoing functions. Sort modules provide 194 openings adjustable in 1 inch increments. Overall height adjusts from 74 to 82

inches. Specify Letter, Legal or Oversize sort modules.

## WORK STATIONS



**MANIFEST STATION** 54 X 30 CTA Table features cable access, forms storage module. 19" shelf clearance and sliding doors. RMP style riser is 19-1/2" H x 16"D with fully articulating keyboard platform. Overall height adjusts from 47-1/2 to 55-1/2 inches.



**MANAGERS STATION** provides efficient work space. Locking overhead module has adjustable horizontal and vertical dividers. Upholstered tackboard panels in 19-1/2" high riser improve acoustical quality. Height adjusts from 64 to 72 inches.

## BULK SORT STANDS

Heavy gauge steel racks hold bulk sorting bins and tubs. Angled shelves provide easy access to mail tubs. Baked enamel finish from Mail Master

paint color selection. Select from a variety of table top and free standing models. Bins and tubs are ordered separately.

### TABLE TOP



### FREE STANDING



### BULK MAIL BINS AND TUBS

Select from a variety of bulk mail bins and tubs, such as those shown here. Hopper front bins are not recommended for stands with angled shelves.



## LITERATURE RACKS

These units are comprised of two Mail Master 31-1/2" high sort modules on sturdy steel 6" base with leveling glides. Each vertical section provides 20 openings, adjustable in 1 inch increments. Pre-sort, Letter, Legal and Oversize models available. Or, ask us to design a literature rack configuration to meet your requirements.

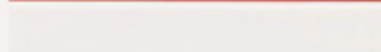


## SPECIAL NEEDS

This station, designed for sorting mail from a seated position, is just one example of Mail Master work stations custom tailored to meet specific requirements.



## PAINT COLORS



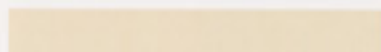
White



Antique White



Gray



Putty



Dawn



Beige



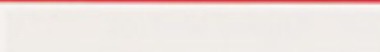
Bronze



Black

Printed colors are representative only.  
Actual samples available upon request.

## LAMINATE FINISHES



White



Antique White



Gray



Putty



Dawn



Beige



Natural Oak



Medium Oak



Teak



Walnut

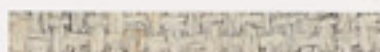


Mahogany

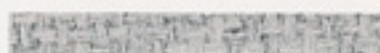
## UPHOLSTERY COLORS



White



Opal



Silver Neutral



Medium Gray



Crystal Blue



Baltic Blue



Rose



Claret Accent



Green Neutral



Turquoise Accent

## ORDERING INFORMATION

- Order may be placed by telephone, fax or mail.  
PHONE: 800-365-5770 FAX: 612-646-8556
- Specify model number, paint color and laminate finish. Sort module interior (white, almond or gray only) selected by factory unless otherwise specified.
- To help us provide exactly what you need, please specify any additional information:  
Will sort modules be stacked? Are finished backs required on sort modules?  
Are tables to have PVC edges?  
Whenever possible provide a rough sketch of intended layout.
- Furniture will be shipped by common carrier in cartons banded to shipping pallets.  
Terms: f.o.b. Factory, St. Paul, MN 55114.

### MTM BUSINESS SYSTEMS

1622 Edinger Ave., Suite F  
Tustin, CA 92780

714-258-4656 FAX 714-258-5660

**MAIL MASTER**

RAYMOND ENGINEERING, INC.

**REI**

704 VANDALIA ST. ST. PAUL, MN 55114-1303

• TELEPHONE: 612/646-4047

• SALES: 800-365-5770

• FAX: 612/646-8556

Ask about our  
FREE MAIL MASTER  
Mail Cart Catalog

