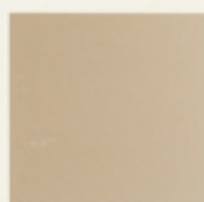


Direct Line Rotary File Paint Finishes

Finishes

Standard Colors



Warm Brown



Charcoal



Cool Grey

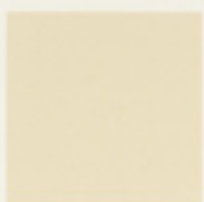


Putty

Rotary Files finished in Cool Grey and Putty are furnished with matching dividers and vinyl trim.

Cabinets finished in any other color are furnished with Charcoal dividers and vinyl trim.

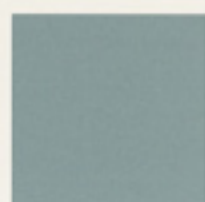
Special Stocking Colors



White



Chinchilla



Slate Blue



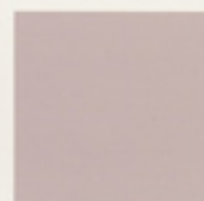
Balsam



Graphite Blue



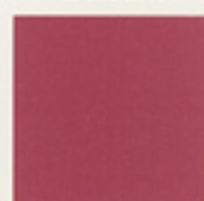
Black



Ruby Grey



Neutral Grey



Quiet Rose



Sage Green



Teal

Direct Line Rotary Files are covered with an electrostatically applied powder paint finish to give you years of service while retaining the "like new" appearance. The matte finish is smudge resistant and available in a variety of colors with a gloss range of 30° to 40°.

Color Type	Colors Available	Lead Time	Upcharge
Standard Colors	Cool Grey & Putty	Stock	No additional charge
	Warm Brown & Charcoal	5-8 Weeks	
Special Stocking Colors	White, Slate Blue, Graphite Blue, Chinchilla, Neutral Grey, Sage Green, Ruby Grey, Balsam, Teal, Quiet Rose and Black	8-10 Weeks	\$150.00 Net Set-up
Match Color	All custom colors	10-12 weeks	\$500.00 Net Set-up + 10% of Dealer Purchase Price

For matched colors, Dealer must provide sample of color and approve custom match before painting of order.

These representations of the Direct Line Rotary File's colors are as close as possible within the limits of modern graphic processes.

DIRECTLINE